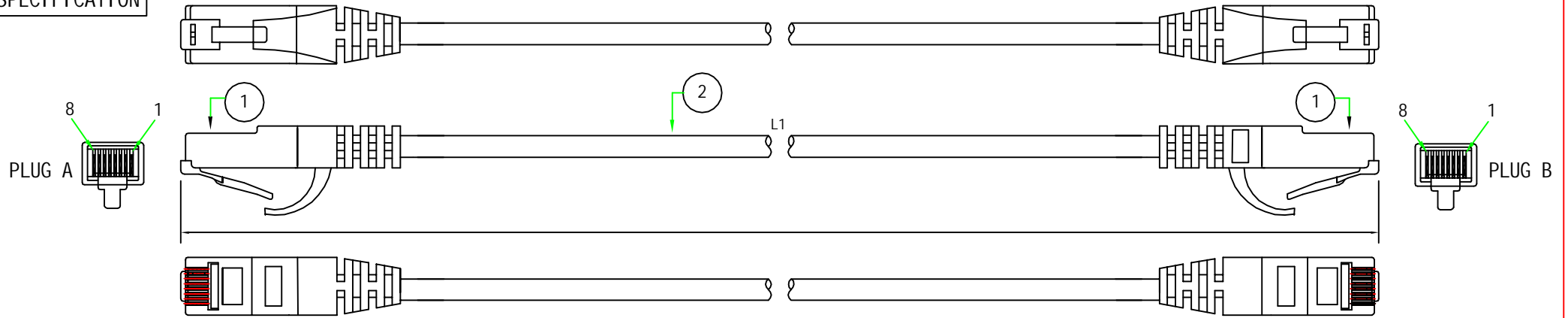


SPECIFICATION



PIN OUT 568B(Standard)

PLUG A

PLUG B

(White/Orange) 1	—	1(White/Orange)
(Orange) 2	—	2(Orange)
(White/Green) 3	—	3(White/Green)
(Blue) 4	—	4(Blue)
(White/Blue) 5	—	5(White/Blue)
(Green) 6	—	6(Green)
(White/Brown) 7	—	7(White/Brown)
(Brown) 8	—	8(Brown)

MATERIAL LIST

NO.	PART NO.	Q'ty	DESCRIPTION	Supplier's Part NO.
1	ZPUA001	2PCS	RJ-45, PLUG 8P8C, PIN GOLD PLATED 50Micro-inch, UN-Shielded, 2 Prongs, White Insert	104F-2E(COB)
2	ZGA2004	(L2)	UTP 24AWG 4 PAIR PATCH CABLE CAT5E JACKET COLOR: Beige PVC	MGA2004(CTi-M)

ETI 新泰工業 CHING TAI ELECTRIC WIRE & CABLE CO., LTD.

NO.	REFERENCE
△	依YPEK001改Mold ing加保護蓋, 詳見NO. 96078說明. (2006/3/27)
△	
△	

PART NO.: YPER001

Page: 1/2

REV. NO.: 960327

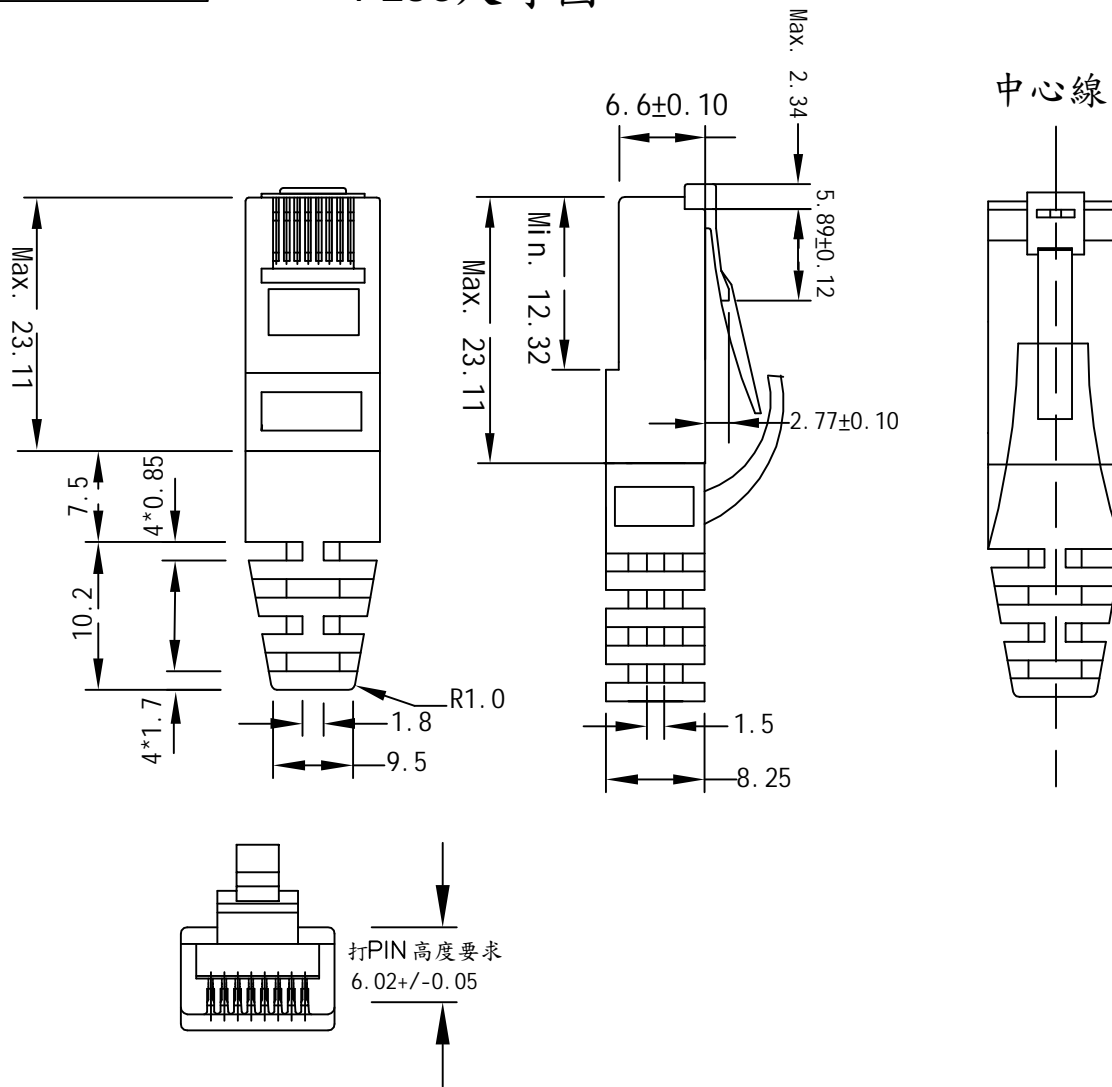
Approve: Teresa

Design: Betty

Ass'y Dept.
Mar. 27. 07
ISSUE DATE

SPECIFICATION

PLUG尺寸圖



*工程特記事項:

1. a 成品長度: (1)15M(含)以下: L1+/- 50mm

(2)15M以上-30M(含): L1+/- 70mm

(3)30M以上: L1+/- 100mm

b. 裁線長度: L2=L1+0.02m

c 注塑時不可有注膠不滿、縮水、氣泡、色差、混色、雜質、流紋、燒焦、披峰、壓傷鐵殼、插頭壓傷、彈片壓傷等情形發生.

2. Mold要求:

(1) 平行MOLDED保護蓋, 外模顏色與線材顏色一致, 加工打PIN高度6.02±/-0.05mm

(2) PLUG內Mol di ng衝膠形狀需完整.

3. 組裝要求:

不可錯位, PLUG彈片需靈活.

4. 其它要求:

(1) MOLD後pvc protector必須對準中心線, 目視無偏移現象, mol di ng無SHOW字。

(2) MOLD后網尾的部分必須尺寸分明且平行, 不可有不齊及縮水現象。

單位: mm

ETI 新泰工業 CHING TAI ELECTRIC WIRE & CABLE CO., LTD.		PART NO.: YPER001	Approve: Teresa	Ass'y Dept. Mar. 27. 07 ISSUE DATE
NO.	REFERENCE	Page: 2/2		
△	依YPEK001改Mol di ng加保護蓋, 詳見NO. 96078說明. (2006/3/27)	REV. NO.: 960327	Design: Betty	
△				