



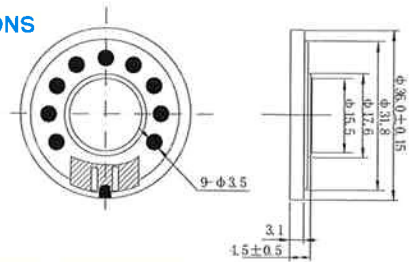
WUC3626-01



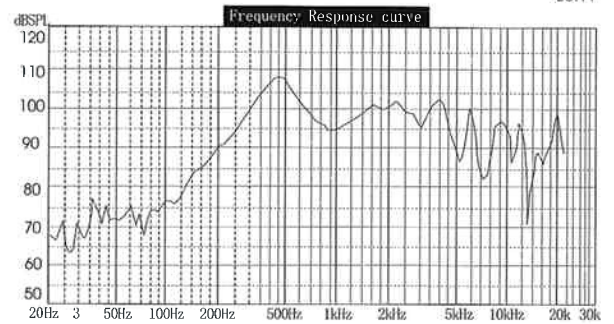
SPECIFICATIONS

Rated Input Power	0.25 W
Rated Impedance	32 ± 15% ohm at 1K Hz 2.38 V
Max Input Power	0.5 W
Rated Resonant Frequency	370 ± 20% Hz without baffle
Frequency Range	Fo- 5K Hz Output S.P.L-10dB
Sensitivity (S.P.L)	96 ± 3 dB /0.1M at 1KHz
Distortion	5% Max Rated Power Input 1K Hz
Magnet	φ12.5×1.5 NdFeB
Housing Materia	ABS
Net Weight	
Operating Temperature	-10 ~ +40°C

DIMENSIONS



FREQUENCY RESPONSE



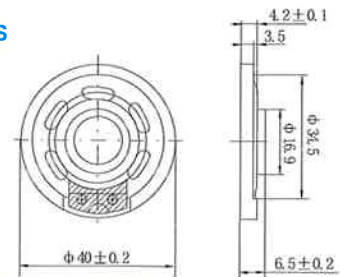
WUC40-11



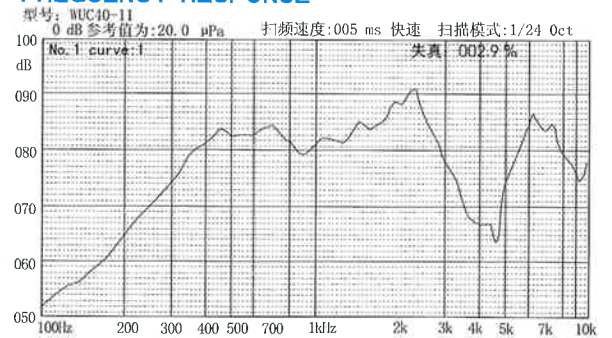
SPECIFICATIONS

Rated Input Power	0.25 W
Rated Impedance	8 ± 15% ohm at 1K Hz 1.41V
Max Input Power	0.5 W Must be normal at a white noise or one minute
Rated Resonant Frequency	500 ± 25% Hz at 1.41 V
Frequency Range	Fo - 4K Hz 10 dB Dev
Sensitivity (S.P.L)	82 ± 3 dB (1 W 1 M) Average at 0.8,1.0,1.2,1.5 kHz
Distortion	< 5% at 1 kHz 0.25 W
Magnet	NdFeB 9.5×1.5 mm 0.8 g (0.35 Oz)
Housing Materia	ABS
Net Weight	6 g
Operating Temperature	-10 ~ +40°C

DIMENSIONS



FREQUENCY RESPONSE



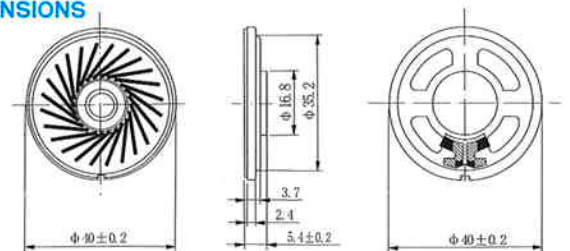
WUC40-12



SPECIFICATIONS

Rated Input Power	0.5 W
Rated Impedance	8 ± 15% ohm at 1K Hz 2 V
Max Input Power	1 W
Rated Resonant Frequency	600 ± 25% Hz Without Baffle
Frequency Range	Fo - 4.5K Hz Output S.P.L -10dB
Sensitivity (S.P.L)	88 ± 3 dB at 1K Hz
Distortion	2.5 Max Rated Power Input 1K Hz
Magnet	φ 12.5×1.5 NdFeB
Housing Materia	IRON
Net Weight	9 g
Operating Temperature	-10 ~ +40°C

DIMENSIONS



FREQUENCY RESPONSE

