



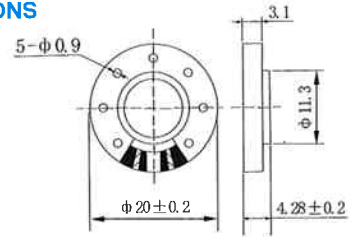
WUC20-11



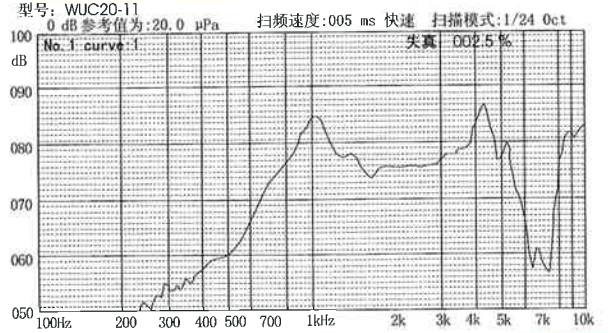
SPECIFICATIONS

Rated Input Power	0.1 W
Rated Impedance	8 ohm \pm 15% at 1K Hz 0.89 V
Max Input Power	0.2 W Must be normal at a white noise for one minute
Rated Resonant Frequency	1K \pm 25% Hz at 0.89 V
Frequency Range	Fo to 5.5K Hz 10 dB Dev
Sensitivity (S.P.L)	78 \pm 3 dB (1 W 1 M) Average at 0.8,1.0,1.2,1.5 KHz
Distortion	< 5% at 1K Hz 0.1 W
Magnet	6.5 \times 1.5mm 0.5 g NdFeB (0.35 Oz)
Housing Materia	ABS
Net Weight	
Operating Temperature	-10 ~ +40 $^{\circ}$ C

DIMENSIONS



FREQUENCY RESPONSE



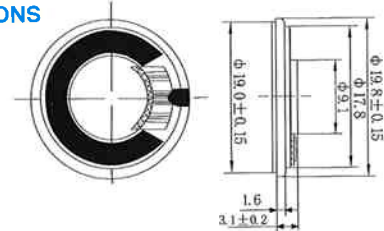
WUC2024-02



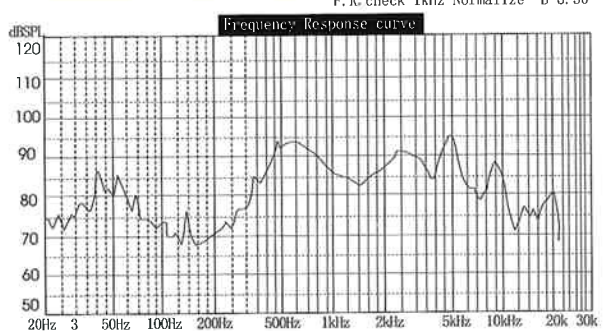
SPECIFICATIONS

Rated Input Power	0.3 W
Rated Impedance	16 \pm 15% ohm at 1K Hz 2.19 V
Max Input Power	0.6 W
Rated Resonant Frequency	700 \pm 20% Hz Without Baffle
Frequency Range	Fo -5K Hz Output S.P.L-10dB
Sensitivity (S.P.L)	85 \pm 3 dB /0.1M at 1K Hz
Distortion	5% Max Rated Power Input 1K Hz
Magnet	ϕ 6.5 \times 1.0 NdFeB
Housing Materia	IRON
Net Weight	
Operating Temperature	-10 ~ +40 $^{\circ}$ C

DIMENSIONS



FREQUENCY RESPONSE



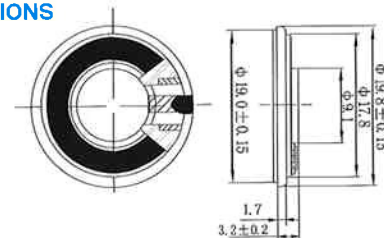
WUC2024-03



SPECIFICATIONS

Rated Input Power	0.25 W
Rated Impedance	8 \pm 15% ohm at 1K Hz 1.41 V
Max Input Power	0.5 W
Rated Resonant Frequency	750 \pm 20% Hz Without Baffle
Frequency Range	Fo -5K Hz Output S.P.L -10dB
Sensitivity (S.P.L)	94 \pm 3dB /0.1M at 1K Hz
Distortion	5% Max Rated Power Input 1K Hz
Magnet	ϕ 6.5 \times 0.8 NdFeB
Housing Materia	IRON
Net Weight	
Operating Temperature	-10 ~ +40 $^{\circ}$ C

DIMENSIONS



FREQUENCY RESPONSE

